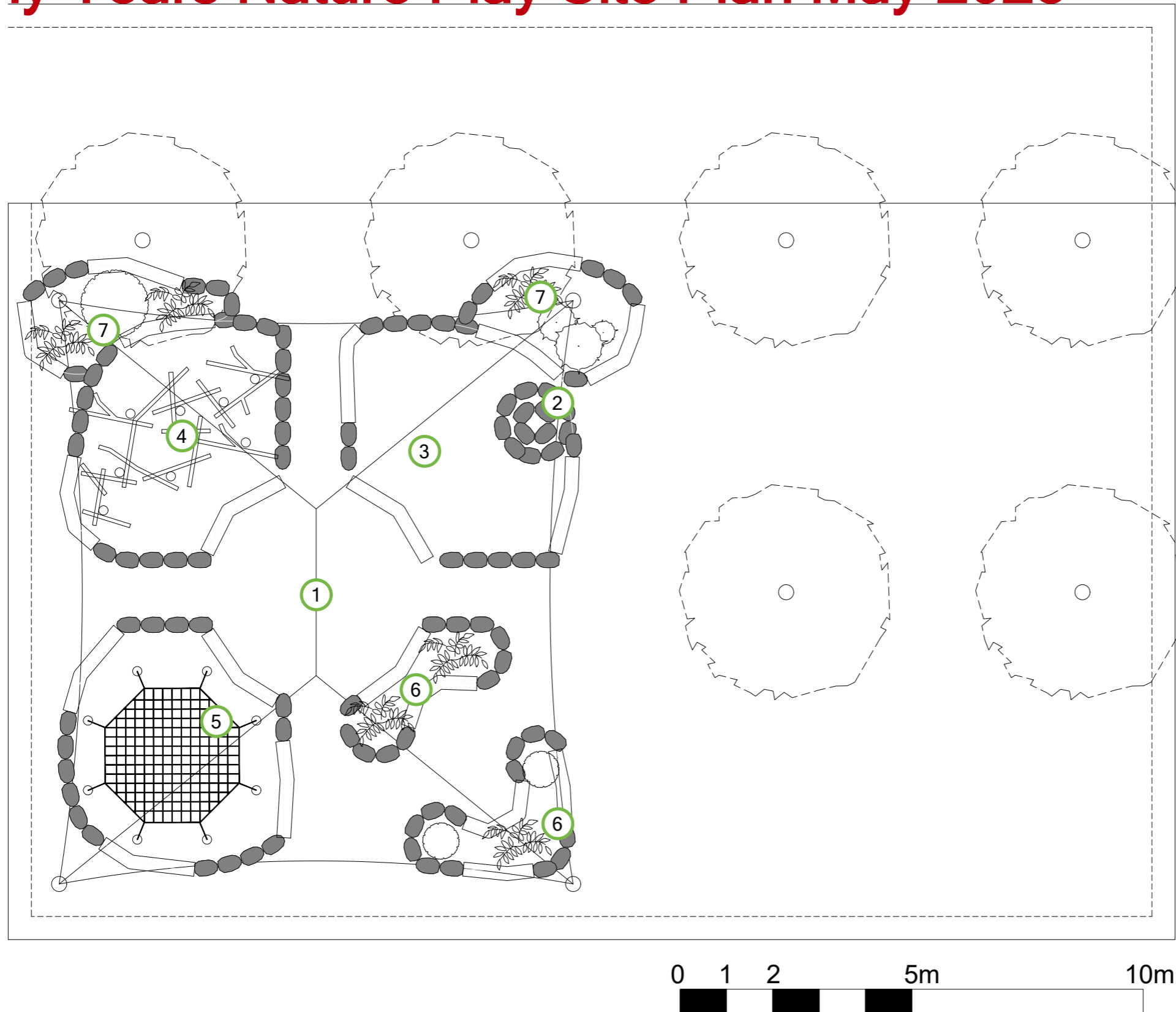


Early Years Nature Play Site Plan May 2023



DESCRIPTION & REFERENCE IMAGES

- 1 Meeting Circle - great space for larger group activities and for outdoor learning opportunities



- 2 Push Tap - rock mound that surrounds the push tap, cascading the water when pressed



- 3 Sand Pit - a popular addition to any playscape, the sandpit offers endless creative possibilities through sculpting and manipulation of sand



- 4 Low Balance Scramble - challenge your balance and agility on the low logs which can also double as informal seating



- 5 Spider Net - low angled octagonal net that can be used for informal seating or hanging out

- 6 Garden Beds - for growing a variety of sensory and native plants