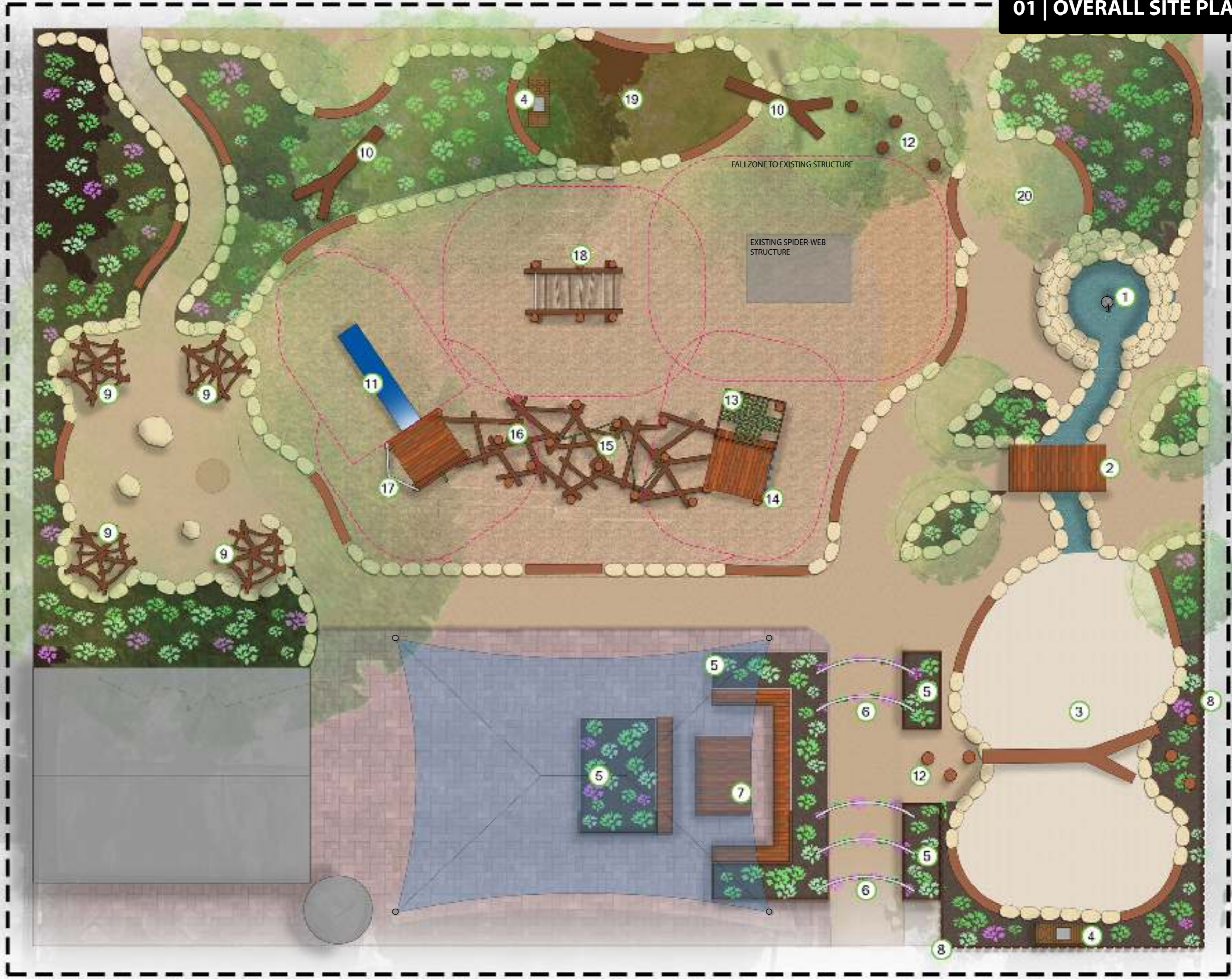


01 | OVERALL SITE PLAN



SURFACE LEGEND:

	Barkchip
	Soil
	Sand
	Water Course
	Rubble
	Decking
	Existing Paving
	Earth

EXTENT OF WORKS

Project OUR LADY QUEEN OF PEACE SCHOOL
Address 106 BOTTING STREET, ALBERT PARK, SOUTH AUSTRALIA, 5014



Contact E-mail: simon@climbingtree.com.au
 Ph: 0488499674
Design SH/TT **Concept** TT/KU **Checked** KU



- 1 Water Pump - place for users to pump water and work collaboratively to dam and redirect its flow
- 2 Bridge - built with natural timbers in a rustic fashion
- 3 Sand Pit - a popular addition to any playscape, the sandpit offers endless creative possibilities through sculpting and manipulation of sand
- 4 Sand/ Mud Kitchen - get messy as you engage your imagination and whip up a mighty feast

- 5 Raised Garden Beds with Benches - outdoor learning area planted with multisensory vegetation
- 6 Arbours - over arching arbours welcome users into the space, in time plants wrap themselves around the frame
- 7 Potting Bench - a spot for potting new plants
- 8 Vertical Timbers - tall timbers that help screen the area, separating the quiet from the more active play



- 9 Stick Cubbies Village - small hideouts tucked away, opportunities for social and imaginative play



- 10 Low Level Balance Logs - test your agility and balance, can also be used as seating

- 11 Slide - thrilling way to manoeuvre down from the platform

- 12 Log Steppers - invites users into a space/activity

- 13 Net Steppers - challenging way to get up to the platform, can also chill on top

- 14 Rock Climbing Wall - develop upper body strength as you problem solve your way up

- 15 Rope Traverse - hold on tight as you balance across the ropes



- 16 Log Scramble - unique arrangement of logs creating a gross motor challenge that encourages climbing, problem solving and risk taking

- 17 Slide Pole - quick way to go down

- 18 Monkey bars - allows users to hang below or chill out on top

- 19 Mudpit - a hands on area great for imaginative and fine motor play

- 20 Metting Circle - great space for larger group activities and for outdoor learning opportunities

